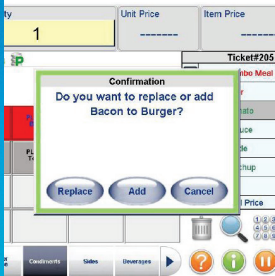


Fresh Meals. Consolidated Data. Accurate. Efficient. Flexible.



Simplified Processes

Made to Order eliminates the need for a separate PLU to account for each individual component of a quick-service combo meal. A single ticket – with a single barcode – contains every detail relating to the order, including condiments, toppings, sides and any other customizations made to the order by the customer. This shortens the retailer's service process by one to two steps.



Improved Profitability

Made to Order makes it easy for counter associates to customize each order and to suggest upsell items – like bacon, cheese and gourmet sides – to any order, without the need to create a dummy PLU or other cumbersome workaround. Color-coded preset keys make it easy to prompt the profit-boosting extras, while the software can track and report every selection.



Enhanced Shopping Experience

Consumers continue to demonstrate an increasing appetite for fresh meal options at retail grocers. The ability to satisfy this demand with a diverse and flexible menu is critical to sales growth. A smooth, efficient, accurate process for ordering and fulfillment contributes to a satisfied clientele, appreciative associates and a stronger sales effort.



Flexibility

Made to Order can be easily incorporated into any UC Evo CT model that runs Fusion 5.1 (or above) software. It can be configured in a variety of ways to take optimal advantage of your existing operational workflow and preferences.



Made to Order Integrated Ordering System

METTLER TOLEDO Fusion scale application with the new Made to Order functionality addresses the changing, challenging landscape faced by grocers and other food retailers today – how to offer a diverse selection of fresh prepared meals without inviting a blizzard of bookkeeping complications.

Enabling the Made to Order option to your Fusion scale application offers fresh meal sales associates a user-friendly interface to customize orders, transforming your service counter into a Quick Service Restaurant. With the capability to select or deselect condiments, substitute side dishes and offer upgrade items, the advanced software inputs all details for optimized inventory tracking and increased profitability.

- Eliminates confusion for customers by providing consolidated, detailed, accurate meal ticketing
- Provides complete tracking information for all meal components with a single barcode
- Enhances opportunities for upselling with on-screen prompts and easy keying
- Simplified yet comprehensive data stream improves sales reporting
- Allows retailers to offer more diverse menu options while ensuring correct pricing

Technical data
Made to Order option

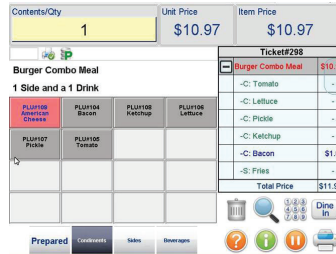
Minimum System Requirements
METTLER TOLEDO Fusion 5.1 (or above) scale application software

- Supported Devices**
- UC-CWQ Evo CT
 - UC-CWT Evo CT
 - UC-GT Evo CT

Operating System
Windows® Embedded Standard 7

- Licensing**
The following licensing options are available:
- 10-day trial license – free of charge for one scale
 - Annual software license per scale
 - POS integration license per store

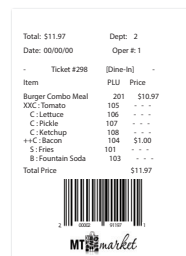
Further information
Please contact your METTLER TOLEDO Sales Representative for additional information about software products.



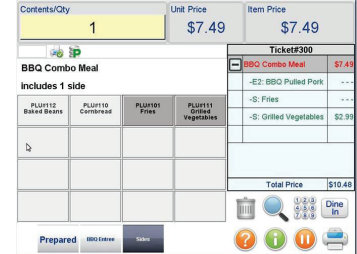
Made to Order enables counter associates to easily suggest add-ons from color-coded keys for increased retailer profitability.



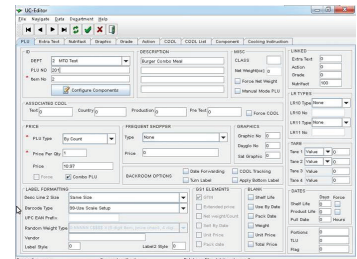
Selections in a Made to Order combo can be changed from defaults, added or removed by selecting/deselecting from the preset grid or highlighting in the ticket window and clicking the trash can.



All items associated with an order are included in a single ticket/barcode for easy identification by the customer, and easy tracking by the retailer.



Additional items (with price) are shown on the order screen, while included sides are also identified for sales and inventory tracking.



Sophisticated software provides the capability to easily define the potentially complex relationships between components in a food offering.

Department	PLU Number	Value	Current Date Time	
2	101	0	4/20/16 2:28 PM	Fries
2	106	0	4/20/16 2:28 PM	Lettuce
2	105	0	4/20/16 2:28 PM	Tomato
2	107	0	4/20/16 2:28 PM	Pickle
2	108	0	4/20/16 2:28 PM	Ketchup
2	204	1	4/20/16 2:28 PM	Bacon
2	103	0	4/20/16 2:28 PM	Fountain Soda
2	201	10.97	4/20/16 2:28 PM	Burger Combo Meal

With Made to Order, every single item in a meal purchase can be identified for inventory and sales reporting.

www.mt.com/retail

For more information



ISO 9001 quality management certification
ISO 14001 environmental management certification

Subject to technical changes.
© 6/2016 Mettler-Toledo, LLC
Printed in USA RDB026.0E